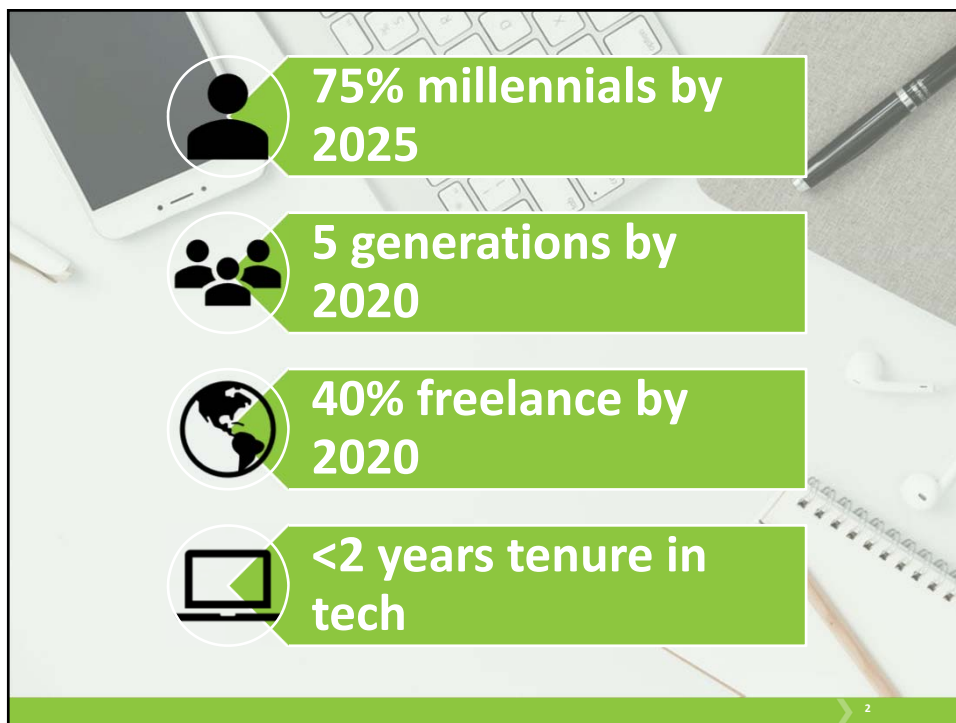
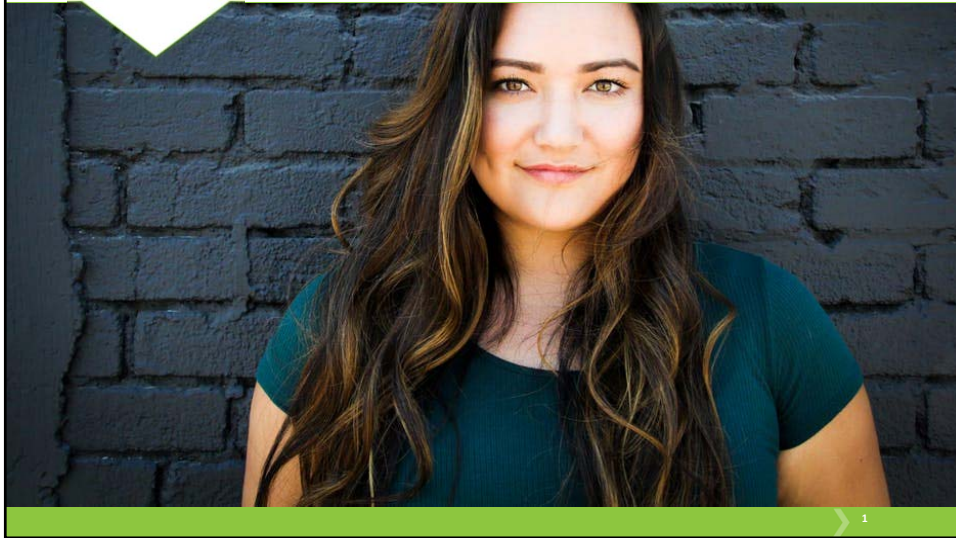
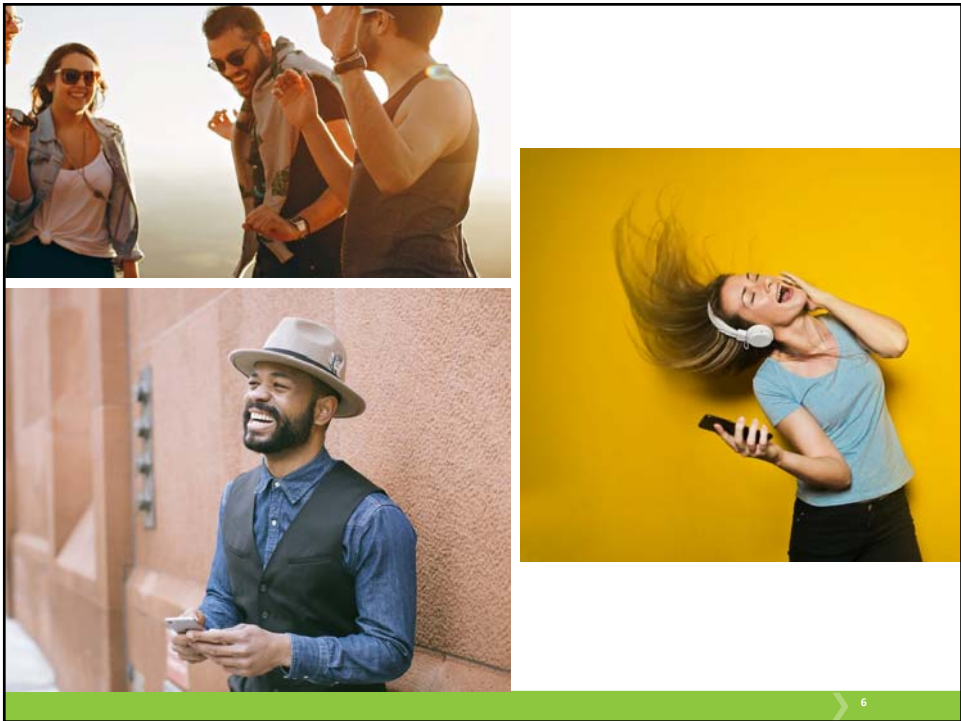


People Engaging People:
Reintroducing Human Contact
in a Technology-Driven World

Kristen Campbell,
ACE Health Coach
ACE Behavior Change Specialist
ALA Freedom From Smoking Facilitator



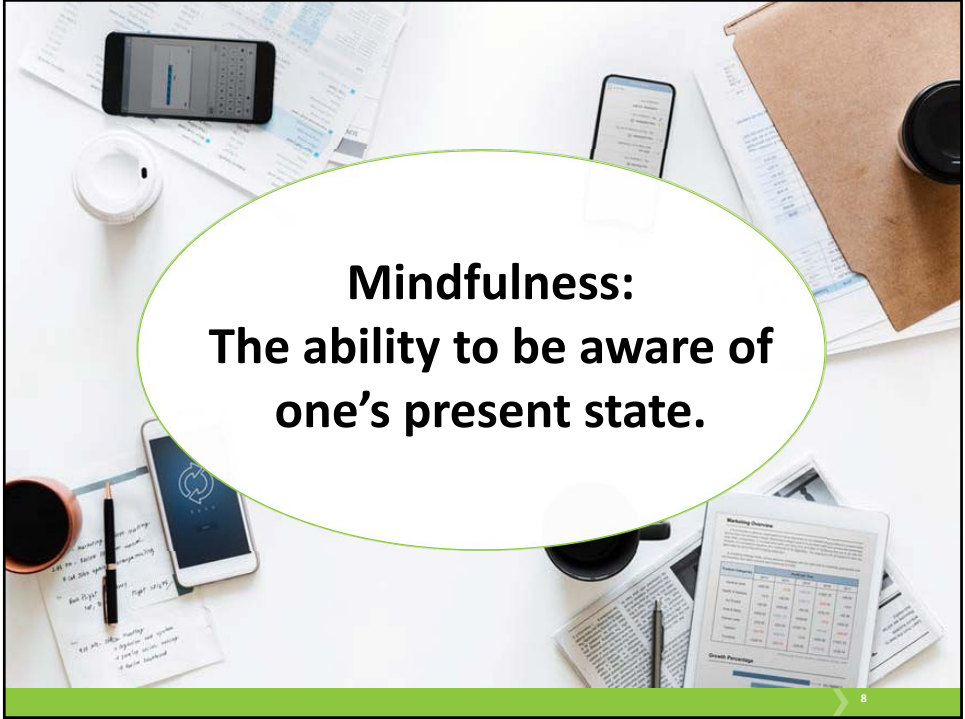




Courage is a bi-product of vulnerability.

It's non-negotiable for a leader

7



Mindfulness:
The ability to be aware of
one's present state.

8



The PAID Reality

Pressured
Always On
Information Overload
Distracted

9



Vulnerable – Mindful – Compassionate

10

The future is **HUMAN**
and it starts with **YOU**

11

60 SECOND TAKEAWAY



12



“Why
won’t my
people
engage?”

- almost every HR leader ever

13



Employee experience is the bi-product of
leadership intentionality and investment.

14



Basic Human Needs:

Meaning

Happiness

Connection

Desire to contribute positively to the world

15



16



6 months

17

Culture
Communication
Choice
Cause
Courageous Leadership
Contributions

18



“Connection is why we’re here.
It gives purpose and
meaning to our lives.”
Brené Brown

19

60 SECOND TAKEAWAY



20



**“I’ve
never
worked at
a place
like this
before.”**

21

**What would make someone
want to spend the majority of
their waking hours at your
organization?**

22



Improving human lives through organizational structure

We all want an environment where people
FEEL like they belong. FEEL valued.
FEEL connected.

